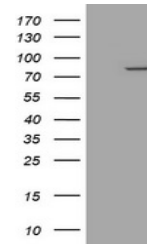


Product Datasheet

Solo (SESTD1) antibody (orb1334056)

| | |
|----------------------------|--|
| Description | Mouse monoclonal antibody to Solo (SESTD1) |
| Species/Host | Mouse |
| Reactivity | Human, Mouse, Rat |
| Conjugation | Unconjugated |
| Tested Applications | WB |
| Immunogen | Full length human recombinant protein of human SESTD1(NP_835224) produced in HEK293T cell. |
| Target | SESTD1 |
| Storage | Maintain refrigerated at 2-8°C for up to 2 weeks. For long term storage store at -20°C in small aliquots to prevent freeze-thaw cycles. |
| Note | For research use only |
| Application notes | For reconstitution, we recommend adding 100uL distilled water to a final antibody concentration of about 1 mg/mL. To use this carrier-free antibody for conjugation experiment, we strongly recommend performing another round of desalting process. |
| Isotype | IgG2b |
| Clonality | Monoclonal |
| MW | 79.2 kDa |
| Uniprot ID | Q86VW0 |
| NCBI | NM_178123 |
| Dilution Range | WB 1:500 |
| Expiration Date | 12 months from date of receipt. |



Western blot analysis of HEK293T cells w...