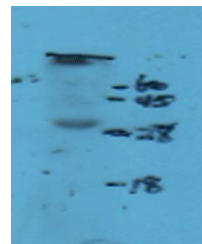


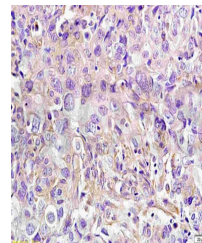
Product Datasheet

NKp44 antibody (orb13334)

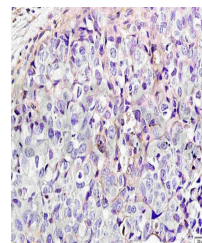
Description	NKp44 antibody
Species/Host	Rabbit
Reactivity	Human
Conjugation	Unconjugated
Tested Applications	ELISA, IF, IHC-Fr
Immunogen	KLH conjugated synthetic peptide derived from human CD336 (201-276/276 aa)
Target	NCR2
Preservatives	0.01M TBS(pH7.4) with 1% rAlbumin, 0.03% Proclin300 and 50% Glycerol.
Form/Appearance	Liquid
Concentration	1mg/ml
Storage	Shipped at 4°C. Store at -20 °C for one year. Avoid repeated freeze/thaw cycles.
Note	For research use only
Isotype	IgG
Clonality	Polyclonal
MW	28 kDa
Uniprot ID	O95944
Expiration Date	12 months from date of receipt.



Western blot of rat liver tissue using N...



Immunohistochemical analysis of paraffin...



IHC-P of human laryngeal cancer using NK...