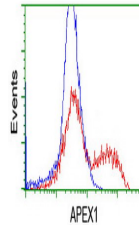


Product Datasheet

APE1 (APEX1) antibody (orb1332989)

Description	Mouse monoclonal antibody to APE1 (APEX1)
Species/Host	Mouse
Reactivity	Human, Mouse, Rat
Conjugation	Unconjugated
Tested Applications	FC, IF, IHC, WB
Immunogen	Human recombinant protein fragment corresponding to amino acids 1-242 of human APEX1 (NP_001632) produced in E.coli.
Target	APEX1
Storage	Maintain refrigerated at 2-8°C for up to 2 weeks. For long term storage store at -20°C in small aliquots to prevent freeze-thaw cycles.
Note	For research use only
Application notes	For reconstitution, we recommend adding 100uL distilled water to a final antibody concentration of about 1 mg/mL. To use this carrier-free antibody for conjugation experiment, we strongly recommend performing another round of desalting process.
Isotype	IgG2a
Clonality	Monoclonal
MW	35.4 kDa
Uniprot ID	P27695
NCBI	NM_001641
Dilution Range	WB 1:1000, IHC 1:150, IF 1:100, FLOW 1:100
Expiration Date	12 months from date of receipt.



Flow cytometric
Flow cytometric
HEK293T ...