
Product Datasheet

CD69 antibody (orb13326)

Description

CD69 antibody

Species/Host

Rabbit

Reactivity

Guinea pig, Human, Mouse, Rat

Conjugation

Unconjugated

Tested Applications

ICC, IF, IHC-P, WB

Immunogen

KLH conjugated synthetic peptide derived from human CD69. Please contact us for the exact immunogen sequence. The peptide is available as orb12905.

Target

CD69

Form/Appearance

10 mM PBS, 0.02% sodium azide

Concentration

- 100 µg (in 200 µl): 0.5 mg/ml- 200 µg (in 400 µl): 0.5 mg/ml

Storage

Store at 4°C for up to two weeks. For long term storage, aliquot and store at -20°C, avoid freeze/thaw cycles.

Note

For research use only

Isotype

IgG

Clonality

Polyclonal

Purity

Polyclonal antibodies are purified by peptide affinity chromatography

MW

23 kDa

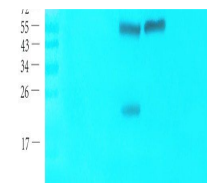
Uniprot ID
[Q07108](#), [P37217](#)
NCBI
[21](#), [001772](#), [001781](#), [11](#)
Entrez
[969](#)
Dilution Range

IF/ICC: 1:50-400, IHC-P: 1:50-400, WB: 1:200-2000

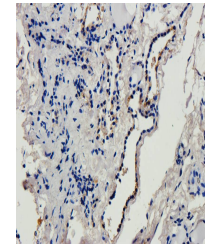
Expiration Date

12 months from date of receipt.

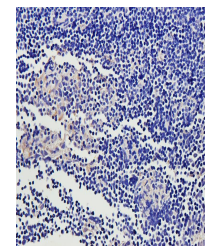
6 5 4 3 2 1



Western blot analysis of mouse spleen (L...



IHC-P staining of human thyroid cancer t...



Immunohistochemical staining of paraffin...