

## Product Datasheet

# Smad Interacting Protein 1 (ZEB2) antibody (orb1332136)

**Description** Mouse monoclonal antibody to Smad Interacting Protein 1 (ZEB2)

**Species/Host** Mouse

**Reactivity** Human, Mouse, Rat

**Conjugation** Unconjugated

**Tested Applications** IHC, WB

**Immunogen** Human recombinant protein fragment corresponding to amino acids 1-350 of human ZEB2 (NP\_055610) produced in E.coli.

**Target** ZEB2

**Storage** Maintain refrigerated at 2-8°C for up to 2 weeks. For long term storage store at -20°C in small aliquots to prevent freeze-thaw cycles.

**Note** For research use only

**Application notes** For reconstitution, we recommend adding 100uL distilled water to a final antibody concentration of about 1 mg/mL. To use this carrier-free antibody for conjugation experiment, we strongly recommend performing another round of desalting process.

**Isotype** IgG1

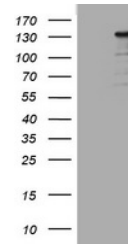
**Clonality** Monoclonal

**Uniprot ID** [O60315](#)

**NCBI** [NM\\_014795](#)

**Dilution Range** WB 1:2000, IHC 1:150

**Expiration Date** 12 months from date of receipt.



Western blot analysis of HEK293T cells w...