

Product Datasheet

Smad Interacting Protein 1 (ZEB2) antibody (orb1332135)

Description Mouse monoclonal antibody to Smad Interacting Protein 1 (ZEB2)

Species/Host Mouse

Reactivity Human, Mouse, Rat

Conjugation Unconjugated

Tested Applications WB

Immunogen Human recombinant protein fragment corresponding to amino acids 1-350 of human ZEB2 (NP_055610) produced in E.coli.

Target ZEB2

Storage Maintain refrigerated at 2-8°C for up to 2 weeks. For long term storage store at -20°C in small aliquots to prevent freeze-thaw cycles.

Note For research use only

Application notes For reconstitution, we recommend adding 100uL distilled water to a final antibody concentration of about 1 mg/mL. To use this carrier-free antibody for conjugation experiment, we strongly recommend performing another round of desalting process.

Isotype IgG1

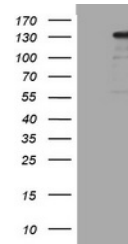
Clonality Monoclonal

Uniprot ID [O60315](#)

NCBI [NM_014795](#)

Dilution Range WB 1:2000

Expiration Date 12 months from date of receipt.



Western blot analysis of HEK293T cells w...