

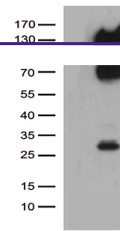
---

## Product Datasheet

**ATP dependent metalloprotease YME1L1 (YME1L1)  
antibody (orb1329339)**

**Description**

Mouse monoclonal antibody to ATP dependent



Western blot analysis of HEK293T cells w...

**Species/Host**

Mouse

**Reactivity**

Human, Mouse, Rat

**Conjugation**

Unconjugated

**Tested Applications**

WB

**Immunogen**

Human recombinant protein fragment corresponding to amino acids 26-345 of human YME1L1(NP\_647474) produced in E.coli.

**Target**

YME1L1

**Storage**

Maintain refrigerated at 2-8°C for up to 2 weeks. For long term storage store at -20°C in small aliquots to prevent freeze-thaw cycles.

**Note**

For research use only

**Application notes**

For reconstitution, we recommend adding 100uL distilled water to a final antibody concentration of about 1 mg/mL. To use this carrier-free antibody for conjugation experiment, we strongly recommend performing another round of desalting process.

**Isotype**

IgG1

**Clonality**

Monoclonal

**MW**

83.1 kDa

**Uniprot ID**
[Q96TA2](#)
**NCBI**
[NM\\_139313](#)
**Dilution Range**

WB 1:500

**Expiration Date**

12 months from date of receipt.