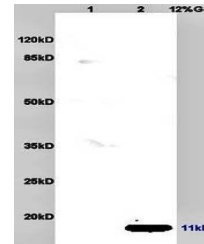


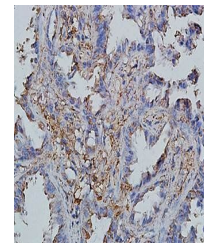
Product Datasheet

MIP3 beta antibody (orb13293)

Description	MIP3 beta antibody
Species/Host	Rabbit
Conjugation	Unconjugated
Tested Applications	ELISA, IF, IHC-Fr, IHC-P, WB
Immunogen	KLH conjugated synthetic peptide derived from mouse CCL19 (26-108/108 aa)
Target	CCL19
Preservatives	0.01M TBS(pH7.4) with 1% rAlbumin, 0.03% Proclin300 and 50% Glycerol.
Form/Appearance	Liquid
Concentration	1mg/ml
Storage	Shipped at 4°C. Store at -20 °C for one year. Avoid repeated freeze/thaw cycles.
Note	For research use only
Isotype	IgG
Clonality	Polyclonal
MW	9.2 kDa
Uniprot ID	070460
Expiration Date	12 months from date of receipt.



Western blot analysis of rat kidney lysa...



Immunohistochemical analysis of formalin...