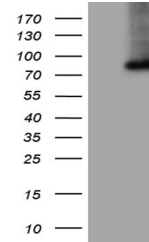


Product Datasheet

MCEE antibody (orb1329006)

Description	Mouse monoclonal antibody to MCEE
Species/Host	Mouse
Reactivity	Human
Conjugation	Unconjugated
Tested Applications	IHC, WB
Immunogen	Full length human recombinant protein of human MCEE (NP_115990) produced in E.coli.
Target	MCEE
Storage	Maintain refrigerated at 2-8°C for up to 2 weeks. For long term storage store at -20°C in small aliquots to prevent freeze-thaw cycles.
Note	For research use only
Application notes	For reconstitution, we recommend adding 100uL distilled water to a final antibody concentration of about 1 mg/mL. To use this carrier-free antibody for conjugation experiment, we strongly recommend performing another round of desalting process.
Isotype	IgG1
Clonality	Monoclonal
Uniprot ID	Q96PE7
NCBI	NM_032601
Dilution Range	WB 1:2000, IHC 1:150
Expiration Date	12 months from date of receipt.



Western blot analysis of HEK293T cells w...