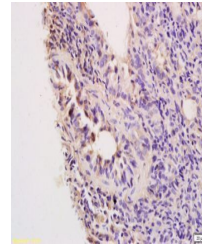


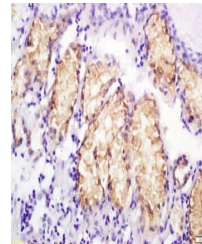
Product Datasheet

CCL13 antibody (orb13285)

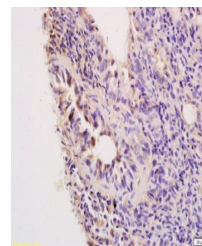
Description	CCL13 antibody
Species/Host	Rabbit
Conjugation	Unconjugated
Tested Applications	ELISA, IF, IHC-Fr, IHC-P
Immunogen	KLH conjugated synthetic peptide derived from human CCL13 (51-98/98 aa)
Target	MCP4
Preservatives	0.01M TBS(pH7.4) with 1% rAlbumin, 0.03% Proclin300 and 50% Glycerol.
Form/Appearance	Liquid
Concentration	1mg/ml
Storage	Shipped at 4°C. Store at -20 °C for one year. Avoid repeated freeze/thaw cycles.
Note	For research use only
Isotype	IgG
Clonality	Polyclonal
MW	110 kDa
Uniprot ID	Q99616
Expiration Date	12 months from date of receipt.



Immunohistochemical staining of Rat lung...



Immunohistochemical staining of human ga...



Immunohistochemical staining of Rat lung...