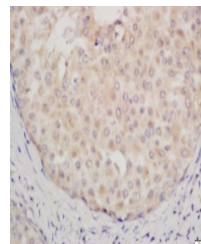


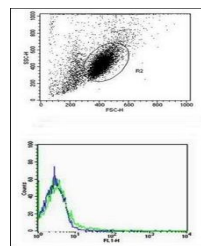
Product Datasheet

MCP5 antibody (orb13284)

Description	MCP5 antibody
Species/Host	Rabbit
Conjugation	Unconjugated
Tested Applications	ELISA
Immunogen	KLH conjugated synthetic peptide derived from mouse CCL12 (23-98/104 aa)
Target	CCL12
Preservatives	0.01M TBS(pH7.4) with 1% rAlbumin, 0.03% Proclin300 and 50% Glycerol.
Form/Appearance	Liquid
Concentration	1mg/ml
Storage	Shipped at 4°C. Store at -20 °C for one year. Avoid repeated freeze/thaw cycles.
Note	For research use only
Isotype	IgG
Clonality	Polyclonal
MW	9 kDa
Uniprot ID	Q62401
Expiration Date	12 months from date of receipt.



Immunohistochemical staining of human brain tissue showing MCP5 expression.



Flow cytometric analysis of mouse spleen cells showing MCP5 expression.