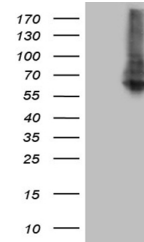


Product Datasheet

HEAB (CLP1) antibody (orb1328341)

Description	Mouse monoclonal antibody to HEAB (CLP1)
Species/Host	Mouse
Reactivity	Human, Mouse, Rat
Conjugation	Unconjugated
Tested Applications	WB
Immunogen	Human recombinant protein fragment corresponding to amino acids 1-226 of human CLP1 (NP_006822) produced in E.coli.
Target	CLP1
Storage	Maintain refrigerated at 2-8°C for up to 2 weeks. For long term storage store at -20°C in small aliquots to prevent freeze-thaw cycles.
Note	For research use only
Application notes	For reconstitution, we recommend adding 100uL distilled water to a final antibody concentration of about 1 mg/mL. To use this carrier-free antibody for conjugation experiment, we strongly recommend performing another round of desalting process.
Isotype	IgG1
Clonality	Monoclonal
MW	47.5 kDa
Uniprot ID	Q92989
NCBI	NM_006831
Dilution Range	WB 1:500~2000
Expiration Date	12 months from date of receipt.



Western blot analysis of HEK293T cells w...