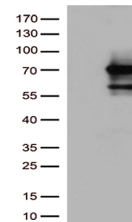


Product Datasheet

Nesprin 1 (SYNE1) antibody (orb1327046)

Description	Mouse monoclonal antibody to Nesprin 1 (SYNE1)
Species/Host	Mouse
Reactivity	Human, Mouse, Rat
Conjugation	Unconjugated
Tested Applications	WB
Immunogen	Human recombinant protein fragment corresponding to amino acids 1-285 of human SYNE1 (NP_598411) produced in E.coli.
Target	SYNE1
Storage	Maintain refrigerated at 2-8°C for up to 2 weeks. For long term storage store at -20°C in small aliquots to prevent freeze-thaw cycles.
Note	For research use only
Application notes	For reconstitution, we recommend adding 100uL distilled water to a final antibody concentration of about 1 mg/mL. To use this carrier-free antibody for conjugation experiment, we strongly recommend performing another round of desalting process.
Isotype	IgG1
Clonality	Monoclonal
Uniprot ID	Q8NF91
NCBI	NM_133650
Dilution Range	WB 1:2000
Expiration Date	12 months from date of receipt.



Western blot analysis of HEK293T cells w...