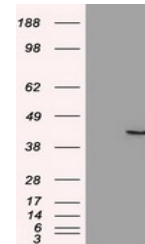


Product Datasheet

Bim (BCL2L11) antibody (orb1326678)

Description	Mouse monoclonal antibody to Bim (BCL2L11)
Species/Host	Mouse
Reactivity	Human, Mouse, Rat
Conjugation	Unconjugated
Tested Applications	WB
Immunogen	Human recombinant protein fragment corresponding to amino acids 1-198 of human BCL2L11 (NP_619527) produced in E.coli.
Target	BCL2L11
Storage	Maintain refrigerated at 2-8°C for up to 2 weeks. For long term storage store at -20°C in small aliquots to prevent freeze-thaw cycles.
Note	For research use only
Application notes	For reconstitution, we recommend adding 100uL distilled water to a final antibody concentration of about 1 mg/mL. To use this carrier-free antibody for conjugation experiment, we strongly recommend performing another round of desalting process.
Isotype	IgG1
Clonality	Monoclonal
Uniprot ID	O43521
NCBI	NM_138621
Dilution Range	WB 1:500
Expiration Date	12 months from date of receipt.



Western blot analysis of HEK293T cells w...