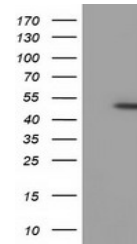


Product Datasheet

SCY1 like 3 (SCYL3) antibody (orb1325421)

Description	Mouse monoclonal antibody to SCY1 like 3 (SCYL3)
Species/Host	Mouse
Reactivity	Human, Monkey
Conjugation	Unconjugated
Tested Applications	IF, IHC, WB
Immunogen	Full-length protein expressed in 293T cell transfected with human SCYL3 expression vector
Target	SCYL3
Storage	Maintain refrigerated at 2-8°C for up to 2 weeks. For long term storage store at -20°C in small aliquots to prevent freeze-thaw cycles.
Note	For research use only
Isotype	IgG1
Clonality	Monoclonal
MW	82.8 kDa
Uniprot ID	Q8IZE3
NCBI	NM_020423
Dilution Range	WB 1:2000 IHC 1:50 IF 1:100 Flow 1:1,000
Expiration Date	12 months from date of receipt.



Western blot analysis of HEK293T cells w...