
Product Datasheet

Aquaporin 7 antibody (orb13253)

Description

Aquaporin 7 antibody

Species/Host

Rabbit

Reactivity

Guinea pig, Human, Rat

Conjugation

Unconjugated

Tested Applications

ICC, IF, IHC-P, WB

Immunogen

KLH conjugated synthetic peptide derived from human Aquaporin 7. Please contact us for the exact immunogen sequence. The peptide is available as orb393917.

Target

Aquaporin 7

Form/Appearance

10 mM PBS, 0.02% sodium azide

Concentration

- 100 µg (in 200 µl): 0.5 mg/ml- 200 µg (in 400 µl): 0.5 mg/ml

Storage

Store at 4°C for up to two weeks. For long term storage, aliquot and store at -20°C, avoid freeze/thaw cycles.

Note

For research use only

Isotype

IgG

Clonality

Polyclonal

Purity

Polyclonal antibodies are purified by peptide affinity chromatography

MW

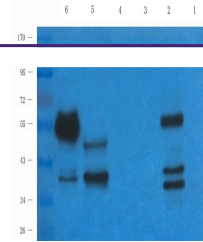
37.2 kDa

Uniprot ID
[O14520](#), [P56403](#), [O54794](#)
NCBI
[001161](#), [001170](#)
Entrez
[364](#)
Dilution Range

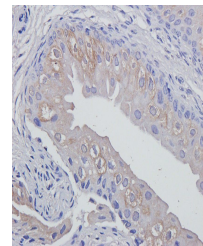
IF/ICC: 1:100-500, IHC-P: 1:100-500, WB: 1:200-1500

Expiration Date

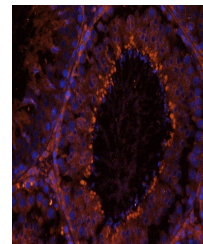
12 months from date of receipt.



Western blot analysis of mouse heart (la...



IHC-P staining of guinea pig bladder tis...



Immunofluorescence image of rat testis t...