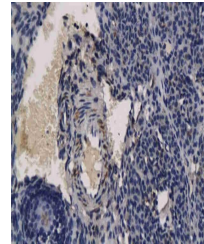


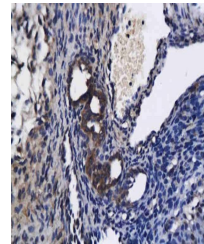
Product Datasheet

Apelin Receptor antibody (orb13251)

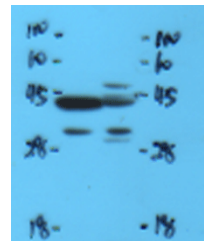
Description	Apelin Receptor antibody
Species/Host	Rabbit
Reactivity	Human, Mouse
Conjugation	Unconjugated
Tested Applications	FC, WB
Immunogen	KLH conjugated synthetic peptide derived from human Apelin receptor (41-140/380 aa)
Target	Apelin Receptor
Preservatives	0.01M TBS(pH7.4) with 1% rAlbumin, 0.03% Proclin300 and 50% Glycerol.
Form/Appearance	Liquid
Concentration	1mg/ml
Storage	Shipped at 4°C. Store at -20 °C for one year. Avoid repeated freeze/thaw cycles.
Note	For research use only
Isotype	IgG
Clonality	Polyclonal
MW	42 kDa
Uniprot ID	P35414
Dilution Range	WB=1:500-2000, Flow-Cyt=1µg/Test
Expiration Date	12 months from date of receipt.



Immunohistochemical analysis of paraffin...



IHC-P of rat ovarian tissue (orb13251 1:...



Western Blot of rat pancreas tissue usin...