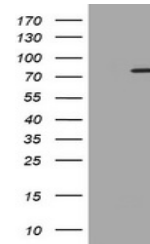


## Product Datasheet

### UBE2M antibody (orb1322613)

<b>Description</b>	Mouse monoclonal antibody to UBE2M
<b>Species/Host</b>	Mouse
<b>Reactivity</b>	Canine, Human, Monkey, Mouse, Rat
<b>Conjugation</b>	Unconjugated
<b>Tested Applications</b>	IF, WB
<b>Immunogen</b>	Full length human recombinant protein of human UBE2M(NP_003960) produced in HEK293T cell.
<b>Target</b>	UBE2M
<b>Storage</b>	Maintain refrigerated at 2-8°C for up to 2 weeks. For long term storage store at -20°C in small aliquots to prevent freeze-thaw cycles.
<b>Note</b>	For research use only
<b>Isotype</b>	IgG1
<b>Clonality</b>	Monoclonal
<b>MW</b>	20.7 kDa
<b>Uniprot ID</b>	<a href="#">P61081</a>
<b>NCBI</b>	<a href="#">NM_003969</a>
<b>Dilution Range</b>	WB 1:500~2000, IF 1:100
<b>Expiration Date</b>	12 months from date of receipt.



Western blot analysis of HEK293T cells w...