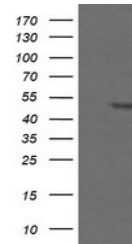


Product Datasheet

Proteasome 20S beta 7 (PSMB7) antibody (orb1322132)

Description	Mouse monoclonal antibody to Proteasome 20S beta 7 (PSMB7)
Species/Host	Mouse
Reactivity	Canine, Human, Monkey, Mouse, Rat
Conjugation	Unconjugated
Tested Applications	IF, WB
Immunogen	Human recombinant protein fragment corresponding to amino acids 58-277 of human PSMB7(NP_002790) produced in E.coli.
Target	PSMB7
Note	For research use only
Isotype	IgG1
Clonality	Monoclonal
MW	29.8 kDa
Uniprot ID	Q99436
NCBI	NM_002799
Dilution Range	WB 1:1000~2000, IF 1:100
Expiration Date	12 months from date of receipt.



Western blot analysis of HEK293T cells w...