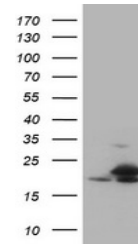


## Product Datasheet

### Cyclin A2 (CCNA2) antibody (orb1320187)

<b>Description</b>	Rabbit polyclonal antibody to Cyclin A2 (CCNA2)
<b>Species/Host</b>	Rabbit
<b>Reactivity</b>	Human, Monkey
<b>Conjugation</b>	Unconjugated
<b>Tested Applications</b>	ELISA, WB
<b>Immunogen</b>	DNA immunization. This antibody is specific for the N Terminus Region of the target protein.
<b>Target</b>	CCNA2
<b>Storage</b>	Maintain refrigerated at 2-8°C for up to 2 weeks. For long term storage store at -20°C in small aliquots to prevent freeze-thaw cycles.
<b>Note</b>	For research use only
<b>Isotype</b>	IgG
<b>Clonality</b>	Polyclonal
<b>Uniprot ID</b>	<a href="#">P20248</a>
<b>NCBI</b>	<a href="#">NM_001237</a>
<b>Dilution Range</b>	WB 1:5000~20000, ELISA 1:100-1:2000
<b>Expiration Date</b>	12 months from date of receipt.



ELISA using Cyclin A2 (CCNA2) antibody