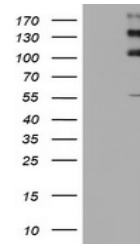


Product Datasheet

Ezrin (EZR) antibody (orb1320151)

Description	Rabbit polyclonal antibody to Ezrin (EZR)
Species/Host	Rabbit
Reactivity	Human
Conjugation	Unconjugated
Tested Applications	ELISA
Immunogen	DNA immunization. This antibody is specific for the Middle Region of the target protein.
Target	EZR
Storage	Maintain refrigerated at 2-8°C for up to 2 weeks. For long term storage store at -20°C in small aliquots to prevent freeze-thaw cycles.
Note	For research use only
Isotype	IgG
Clonality	Polyclonal
Uniprot ID	P15311
NCBI	NM_003379
Dilution Range	WB: 1:5000-1:20000; ELISA: 1:100-1:2000; IHC: 1:10-1:2000; IHC-P 1:250-1:2000
Expiration Date	12 months from date of receipt.



ELISA using Ezrin (EZR) antibody