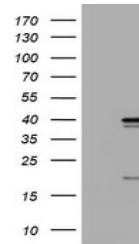


Product Datasheet

Ku80 (XRCC5) antibody (orb1319966)

Description	Rabbit polyclonal antibody to Ku80 (XRCC5)
Species/Host	Rabbit
Reactivity	Canine, Human, Monkey, Mouse
Conjugation	Unconjugated
Tested Applications	ELISA, IHC, WB
Immunogen	DNA immunization. This antibody is specific for the C Terminus Region of the target protein.
Target	XRCC5
Storage	Maintain refrigerated at 2-8°C for up to 2 weeks. For long term storage store at -20°C in small aliquots to prevent freeze-thaw cycles.
Note	For research use only
Isotype	IgG
Clonality	Polyclonal
Uniprot ID	P13010
NCBI	NM_021141
Dilution Range	WB 1:5000~20000, IHC 1:150,ELISA 1:100-1:2000
Expiration Date	12 months from date of receipt.



ELISA using
Ku80
(XRCC5)
antibody