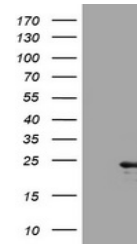


Product Datasheet

MASPIN (SERPINB5) antibody (orb1319848)

Description	Rabbit polyclonal antibody to MASPIN (SERPINB5)
Species/Host	Rabbit
Reactivity	Human
Conjugation	Unconjugated
Tested Applications	ELISA, IHC, WB
Immunogen	DNA immunization. This antibody is specific for the C Terminus Region of the target protein.
Target	SERPINB5
Storage	Maintain refrigerated at 2-8°C for up to 2 weeks. For long term storage store at -20°C in small aliquots to prevent freeze-thaw cycles.
Note	For research use only
Isotype	IgG
Clonality	Polyclonal
Uniprot ID	P36952
NCBI	NM_002639
Dilution Range	WB 1:20000, IHC 1:150, ELISA 1:100-1:2000
Expiration Date	12 months from date of receipt.



Western blot analysis of HEK293T cells w...