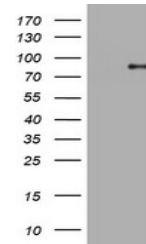


Product Datasheet

Myc tag antibody (orb1319746)

Description	Rabbit monoclonal antibody to Myc tag
Species/Host	Rabbit
Reactivity	Human
Conjugation	Unconjugated
Tested Applications	WB
Immunogen	Synthetic peptide conjugated to KLH
Target	Myc
Preservatives	1XPBS containing 50% glycerol, 1% rAlbumin and 0.02% Sodium azide
Storage	Maintain refrigerated at 2-8°C for up to 2 weeks. For long term storage store at -20°C in small aliquots to prevent freeze-thaw cycles.
Note	For research use only
Isotype	IgG
Clonality	Monoclonal
Dilution Range	WB: 1:2000
Expiration Date	12 months from date of receipt.



Western blot analysis of extracts from H...