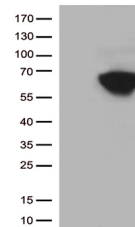


Product Datasheet

SARS-CoV-2 Spike Protein antibody (orb1319608)

Description	Rabbit monoclonal antibody to SARS-CoV-2 Spike Protein
Species/Host	Rabbit
Reactivity	Virus
Conjugation	Unconjugated
Tested Applications	ELISA, WB
Immunogen	Recombinant fusion protein of SARS-CoV-2 Spike RBD Protein and Virion Surface Domain of Membrane Protein (M-protein) produced in HEK293
Target	SARS-CoV-2 Spike Protein
Storage	Maintain refrigerated at 2-8°C for up to 2 weeks. For long term storage store at -20°C in small aliquots to prevent freeze-thaw cycles.
Note	For research use only
Isotype	IgG
Clonality	Monoclonal
MW	34kDa
Dilution Range	WB 1:2000-5000, ELISA 1:5000-10000
Expiration Date	12 months from date of receipt.



Western blot analysis of recombinant SAR...