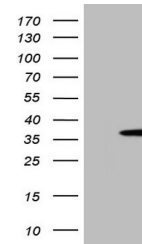


Product Datasheet

CD39 (ENTPD1) antibody (orb1317275)

Description	Mouse monoclonal antibody to CD39 (ENTPD1)
Species/Host	Mouse
Reactivity	Human
Conjugation	Unconjugated
Tested Applications	WB
Immunogen	Human recombinant protein fragment corresponding to amino acids 38-307 of human ENTPD1 (NP_001767) produced in E.coli.
Target	ENTPD1
Note	For research use only
Isotype	IgG2a
Clonality	Monoclonal
Uniprot ID	P49961
NCBI	NM_001776
Dilution Range	WB 1:2000
Expiration Date	12 months from date of receipt.



Western blot analysis of E.coli lysate C...