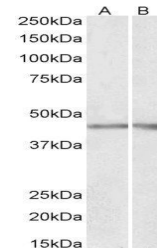


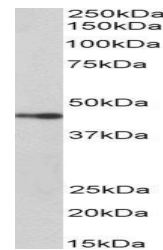
## Product Datasheet

### NPHS2 antibody (orb131711)

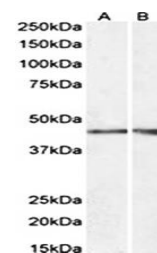
<b>Description</b>	Goat polyclonal to NPHS2
<b>Species/Host</b>	Goat
<b>Reactivity</b>	Bovine, Human, Mouse, Porcine
<b>Conjugation</b>	Unconjugated
<b>Tested Applications</b>	ELISA, WB
<b>Target</b>	NPHS2 / SRN1
<b>Preservatives</b>	Supplied at 0.5 mg/ml in Tris saline, 0.02% sodium azide, pH 7.3 with 0.5% bovine serum albumin. Aliquot and store at -20°C. Minimize freezing and thawing.
<b>Storage</b>	Aliquot and store at -20°C. Minimize freezing and thawing.
<b>Note</b>	For research use only
<b>Application notes</b>	Approx 45kDa band observed in Human and Mouse Kidney lysates (calculated MW of 42.2kDa according to NP_055440.1). Recommended concentration: 0.3-1 µg/ml. WB: Approx 45kDa band observed in Human and Mouse Kidney lysates (calculated MW of 42.2kDa according to NP_055440.1). Recommended concentration: 0.3-1 µg/ml.
<b>Protein Sequence</b>	SPSKPVEPLNPKK
<b>Clonality</b>	Polyclonal
<b>MW</b>	42.2
<b>Entrez</b>	<a href="#">7827</a>
<b>Dilution Range</b>	ELISA: 1:64000, WB: 0.5-2 µg/ml
<b>Expiration Date</b>	12 months from date of receipt.



Western blot analysis of taining of Huma...



Western blot analysis of staining of Pig...



Western blot analysis of Human (A) and M...