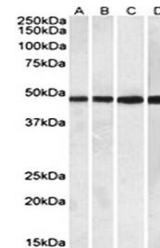


Product Datasheet

BEND5 antibody (orb131710)

Description	Goat polyclonal to BEND5
Species/Host	Goat
Reactivity	Bovine, Canine, Human, Mouse, Rat
Conjugation	Unconjugated
Tested Applications	ELISA, WB
Target	BEND5
Preservatives	Supplied at 0.5 mg/ml in Tris saline, 0.02% sodium azide, pH 7.3 with 0.5% bovine serum albumin. Aliquot and store at -20°C. Minimize freezing and thawing.
Storage	Aliquot and store at -20°C. Minimize freezing and thawing.
Note	For research use only
Application notes	Approx 48kDa band observed in Human Tonsil and Spleen and Mouse Spleen lysates and also in lysates of cell line Daudi (calculated MW of 48.2kDa according to NP_078879.2). Recommended concentration: 0.3-1 µg/ml.WB: Approx 48kDa band observed in Human Tonsil and Spleen and Mouse Spleen lysates and also in lysates of cell line Daudi (calculated MW of 48.2kDa according to NP_078879.2). Recommended concentration: 0.3-1 µg/ml.
Protein Sequence	CKNEERREAKYNLQ
Clonality	Polyclonal
MW	48.2
Entrez	79656
Dilution Range	ELISA: 1:128000, WB: 0.3-1 µg/ml
Expiration Date	12 months from date of receipt.



Western blot analysis of Daudi (A), Huma...