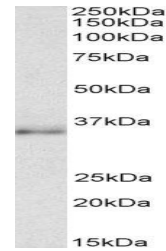


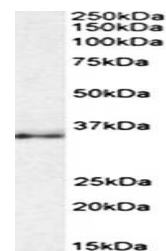
Product Datasheet

CEBPB antibody (orb131705)

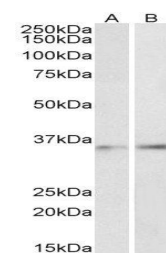
Description	Goat polyclonal to CEBPB
Species/Host	Goat
Reactivity	Bovine, Canine, Human, Mouse, Porcine, Rat
Conjugation	Unconjugated
Tested Applications	ELISA, WB
Target	CEBPB (aa68-81)
Preservatives	Supplied at 0.5 mg/ml in Tris saline, 0.02% sodium azide, pH 7.3 with 0.5% bovine serum albumin. Aliquot and store at -20°C. Minimize freezing and thawing.
Storage	Aliquot and store at -20°C. Minimize freezing and thawing.
Note	For research use only
Application notes	Approx 35kDa band observed in lysates of cell line NIH3T3 (calculated MW of 31.5kDa according to Mouse NP_034013.1). Recommended concentration: 1-3 µg/ml.WB: Approx 35kDa band observed in lysates of cell line NIH3T3 (calculated MW of 31.5kDa according to Mouse NP_034013.1). Recommended concentration: 1-3 µg/ml.
Protein Sequence	DHERAIDFSPYLEP
Clonality	Polyclonal
MW	36.1
Entrez	1051
Dilution Range	ELISA: 1:128000, WB: 1-3 µg/ml
Expiration Date	12 months from date of receipt.



Western blot analysis of staining of NIH3T3 lysate.



Western blot analysis of NIH3T3 lysate (...)



Western blot analysis of staining of NIH3T3 lysate.