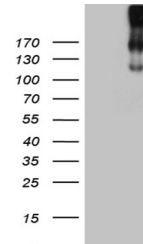


Product Datasheet

CD35 (CR1) antibody (orb1313338)

Description	Mouse monoclonal antibody to CD35 (CR1)
Species/Host	Mouse
Reactivity	Human
Conjugation	Unconjugated
Tested Applications	IHC, WB
Immunogen	Human recombinant protein fragment corresponding to amino acids 1900-2039 of human CR1 (NP_000564) produced in E.coli.
Target	CR1
Storage	Maintain refrigerated at 2-8°C for up to 2 weeks. For long term storage store at -20°C in small aliquots to prevent freeze-thaw cycles.
Note	For research use only
Isotype	IgG2b
Clonality	Monoclonal
Uniprot ID	P17927
NCBI	NM_000573
Dilution Range	WB 1:2000, IHC 1:500
Expiration Date	12 months from date of receipt.



Western blot analysis of HEK293T cells w...