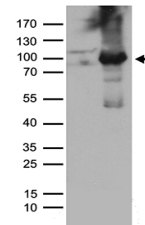


## Product Datasheet

### PKC delta (PRKCD) antibody (orb1311979)

<b>Description</b>	Rabbit polyclonal antibody to PKC delta (PRKCD)
<b>Species/Host</b>	Rabbit
<b>Reactivity</b>	Human, Mouse, Rat
<b>Conjugation</b>	Unconjugated
<b>Tested Applications</b>	WB
<b>Immunogen</b>	Recombinant protein of human PRKCD
<b>Target</b>	PRKCD
<b>Storage</b>	Maintain refrigerated at 2-8°C for up to 2 weeks. For long term storage store at -20°C in small aliquots to prevent freeze-thaw cycles.
<b>Note</b>	For research use only
<b>Isotype</b>	IgG
<b>Clonality</b>	Polyclonal
<b>MW</b>	77.3 kDa
<b>Uniprot ID</b>	<a href="#">Q05655</a>
<b>NCBI</b>	<a href="#">NM_212539</a>
<b>Dilution Range</b>	WB: 1:500~1:1000
<b>Expiration Date</b>	12 months from date of receipt.



Western blot analysis of HEK293T cells w...