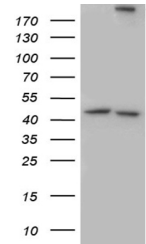


Product Datasheet

Integrin beta 4 (ITGB4) antibody (orb1311907)

Description	Rabbit polyclonal antibody to Integrin beta 4 (ITGB4)
Species/Host	Rabbit
Reactivity	Human, Mouse, Rat
Conjugation	Unconjugated
Tested Applications	WB
Immunogen	Recombinant protein of human ITGB4
Target	ITGB4
Storage	Maintain refrigerated at 2-8°C for up to 2 weeks. For long term storage store at -20°C in small aliquots to prevent freeze-thaw cycles.
Note	For research use only
Isotype	IgG
Clonality	Polyclonal
MW	200.72 kDa
Uniprot ID	P16144
NCBI	NM_001005619
Dilution Range	WB: 1:500~2000
Expiration Date	12 months from date of receipt.



Western blot analysis of HEK293T cells w...