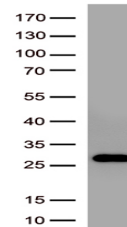


Product Datasheet

S Protein antibody (orb1311880)

| | |
|----------------------------|---|
| Description | Rabbit polyclonal antibody to S Protein |
| Species/Host | Rabbit |
| Reactivity | Virus |
| Conjugation | Unconjugated |
| Tested Applications | ELISA, WB |
| Immunogen | Recombinant SARS-CoV-2 Spike-RBD protein produced in E.coli. |
| Storage | Maintain refrigerated at 2-8°C for up to 2 weeks. For long term storage store at -20°C in small aliquots to prevent freeze-thaw cycles. |
| Note | For research use only |
| Isotype | IgG |
| Clonality | Polyclonal |
| Expiration Date | 12 months from date of receipt. |



Western blot analysis of recombinant SAR...