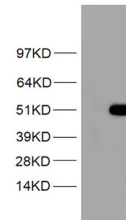


Product Datasheet

Syndecan 1 (SDC1) antibody (orb1311879)

Description	Rabbit polyclonal antibody to Syndecan 1 (SDC1)
Species/Host	Rabbit
Reactivity	Human
Conjugation	Unconjugated
Tested Applications	ELISA, WB
Immunogen	This antibody is raised against a recombinant protein of SDC1 expressed in HEK293 cells
Target	SDC1
Storage	Maintain refrigerated at 2-8°C for up to 2 weeks. For long term storage store at -20°C in small aliquots to prevent freeze-thaw cycles.
Note	For research use only
Isotype	IgG
Clonality	Polyclonal
MW	32.5 kDa
Uniprot ID	P18827
NCBI	NM_001006946
Dilution Range	ELISA 1:5000-10000, WB 1:500
Expiration Date	12 months from date of receipt.



Western blot analysis of HEK293T cells w...