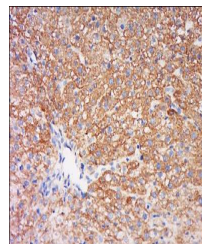


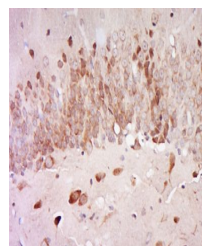
Product Datasheet

AGXT2L2 antibody (orb1304)

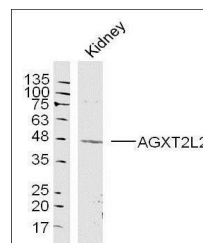
Description	AGXT2L2 antibody
Species/Host	Rabbit
Reactivity	Mouse, Rat
Conjugation	Unconjugated
Tested Applications	WB
Immunogen	KLH conjugated synthetic peptide derived from human AGXT2L2 (381-450/450 aa)
Target	AGXT2L2
Preservatives	0.01M TBS(pH7.4) with 1% rAlbumin, 0.03% Proclin300 and 50% Glycerol.
Form/Appearance	Liquid
Concentration	1mg/ml
Storage	Shipped at 4°C. Store at -20 °C for one year. Avoid repeated freeze/thaw cycles.
Note	For research use only
Isotype	IgG
Clonality	Polyclonal
MW	50 kDa
Uniprot ID	Q8IUZ5
Dilution Range	WB=1:500-2000
Expiration Date	12 months from date of receipt.



Immunohistochemical staining of Mouse li...



Immunohistochemical staining of rat brai...



Western blot analysis of mouse Kidney ly...