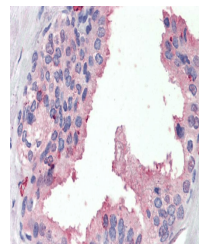


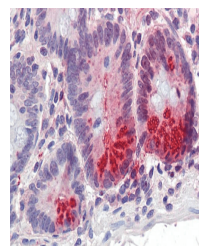
## Product Datasheet

### SRD5A1 antibody (orb13030)

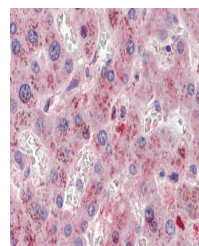
<b>Description</b>	Goat polyclonal to SRD5A1.
<b>Species/Host</b>	Goat
<b>Reactivity</b>	Bovine, Canine, Human, Mouse, Rat
<b>Conjugation</b>	Unconjugated
<b>Tested Applications</b>	ELISA, IHC
<b>Target</b>	SRD5A1
<b>Preservatives</b>	Supplied at 0.5 mg/ml in Tris saline, 0.02% sodium azide, pH 7.3 with 0.5% bovine serum albumin. Aliquot and store at -20°C. Minimize freezing and thawing.
<b>Storage</b>	Aliquot and store at -20°C. Minimize freezing and thawing.
<b>Note</b>	For research use only
<b>Application notes</b>	IHC: Paraffin embedded Human Prostate, Liver and Small Intestine. Recommended concentration: 3.75ug/ml.
<b>Protein Sequence</b>	RNLRKPGDTGYK
<b>Clonality</b>	Polyclonal
<b>MW</b>	29.5
<b>Entrez</b>	<a href="#">6715</a>
<b>Dilution Range</b>	ELISA: 1:1000, IHC-P: 3.75ug/ml
<b>Expiration Date</b>	12 months from date of receipt.



Immunohistochemical staining of Human Prostate



Immunohistochemical staining of Human Small Intestine



Immunohistochemical staining of Human Liver