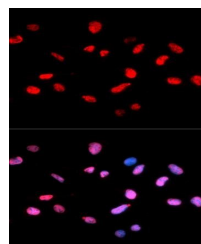


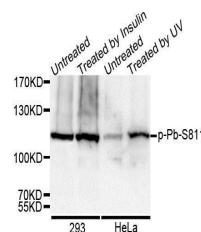
Product Datasheet

RB (phospho-S811) antibody (orb129734)

Description	Rabbit polyclonal antibody to RB
Reactivity	Human
Conjugation	Unconjugated
Tested Applications	WB
Immunogen	A synthetic phosphorylated peptide around S811 of human RB(NP_000312.2).
Preservatives	PBS with 0.02% sodium azide,50% glycerol,pH7.3.
Concentration	1 mg/ml
Storage	Maintain refrigerated at 2-8°C for up to 2 weeks. For long term storage store at -20°C in small aliquots to prevent freeze-thaw cycles.
Note	For research use only
Isotype	IgG
Clonality	Polyclonal
MW	106kDa
Uniprot ID	P06400
Dilution Range	WB: 1:1000-2000, IF/ICC: 1:50-100
Expiration Date	12 months from date of receipt.



Immunofluorescence analysis of U2OS cell...



Western blot analysis of extracts of var...