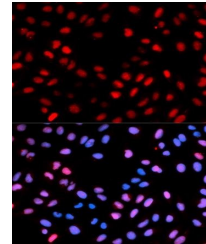


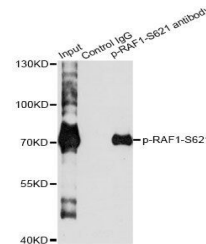
## Product Datasheet

### RAF1 (phospho-Ser621) antibody (orb129731)

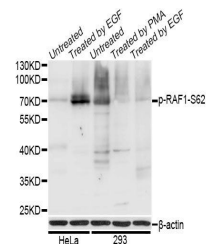
<b>Description</b>	Rabbit polyclonal to RAF1 (phospho-Ser621).
<b>Reactivity</b>	Human
<b>Conjugation</b>	Unconjugated
<b>Tested Applications</b>	IP, WB
<b>Immunogen</b>	A synthetic phosphorylated peptide around S621 of human Phospho-Raf1-S621(NP_002871.1).
<b>Preservatives</b>	PBS with 0.02% sodium azide, 50% glycerol, pH 7.3.
<b>Concentration</b>	1 mg/ml
<b>Storage</b>	Maintain refrigerated at 2-8°C for up to 2 weeks. For long term storage store at -20°C in small aliquots to prevent freeze-thaw cycles.
<b>Note</b>	For research use only
<b>Isotype</b>	IgG
<b>Clonality</b>	Polyclonal
<b>MW</b>	73kDa
<b>Uniprot ID</b>	<b>P04049</b>
<b>Dilution Range</b>	WB: 1:500-2000, IF/ICC: 1:50-200
<b>Expiration Date</b>	12 months from date of receipt.



Immunofluorescence analysis of U2OS cell...



Immunoprecipitation analysis of 200ug ex...



Western blot analysis of extracts of HeL...