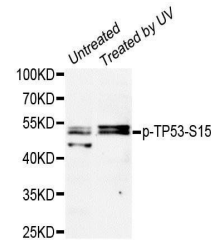


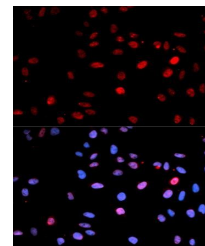
## Product Datasheet

### p53 (phospho-S15) antibody (orb129713)

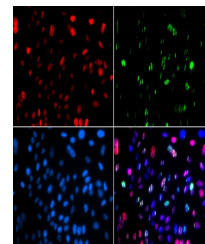
<b>Description</b>	Rabbit polyclonal antibody to p53 (phospho-S15)
<b>Species/Host</b>	Rabbit
<b>Reactivity</b>	Human
<b>Conjugation</b>	Unconjugated
<b>Tested Applications</b>	WB
<b>Immunogen</b>	A synthetic phosphorylated peptide around S15 of human p53 (NP_000537.3).
<b>Preservatives</b>	Buffer: PBS with 0.02% sodium azide, 50% glycerol, pH7.3.
<b>Concentration</b>	1 mg/ml
<b>Storage</b>	Maintain refrigerated at 2-8°C for up to 2 weeks. For long term storage store at -20°C in small aliquots to prevent freeze-thaw cycles.
<b>Note</b>	For research use only
<b>Isotype</b>	IgG
<b>Clonality</b>	Polyclonal
<b>Purity</b>	Affinity purification
<b>MW</b>	53kDa
<b>Uniprot ID</b>	<b>P04637</b>
<b>Entrez</b>	<b>7157</b>
<b>Dilution Range</b>	WB: 1:500-2000, IF/ICC: 1:20-50
<b>Expiration Date</b>	12 months from date of receipt.



Western blot analysis of extracts of HT-1080 cells.



Immunofluorescence analysis of U2OS cells.



Immunofluorescence analysis of GFP-RNF168 cells.