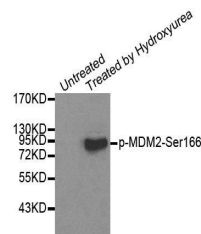


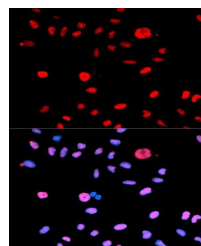
Product Datasheet

MDM2 (phospho-Ser166) antibody (orb129683)

Description	Rabbit polyclonal to MDM2 (phospho-Ser166).
Species/Host	Rabbit
Reactivity	Human, Mouse, Rat
Conjugation	Unconjugated
Tested Applications	WB
Immunogen	A synthetic phosphorylated peptide around S166 of human MDM2 (NP_002383.2).
Preservatives	Buffer: PBS with 0.02% sodium azide, 50% glycerol, pH7.3.
Concentration	1 mg/ml
Storage	Maintain refrigerated at 2-8°C for up to 2 weeks. For long term storage store at -20°C in small aliquots to prevent freeze-thaw cycles.
Note	For research use only
Isotype	IgG
Clonality	Polyclonal
Purity	Affinity purification
MW	95kDa
Uniprot ID	Q00987
Entrez	4193
Dilution Range	WB: 1:500-1000, IF/ICC: 1:50-100
Expiration Date	12 months from date of receipt.



Western blot analysis of extracts from 2...



Immunofluorescence analysis of U2OS cell...