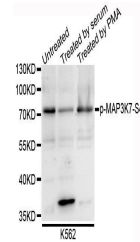


Product Datasheet

MAP3K7 (phospho-Ser439) antibody (orb129674)

Description	Rabbit polyclonal to MAP3K7 (phospho-Ser439).
Reactivity	Human, Mouse, Rat
Conjugation	Unconjugated
Tested Applications	WB
Immunogen	A synthetic phosphorylated peptide around S412 of human TAK1(NP_003179.1).
Preservatives	PBS with 0.02% sodium azide, 50% glycerol, pH 7.3.
Concentration	1 mg/ml
Storage	Maintain refrigerated at 2-8°C for up to 2 weeks. For long term storage store at -20°C in small aliquots to prevent freeze-thaw cycles.
Note	For research use only
Isotype	IgG
Clonality	Polyclonal
MW	75kDa
Uniprot ID	O43318
Dilution Range	WB: 1:500-2000
Expiration Date	12 months from date of receipt.



Western blot analysis of extracts of K562...