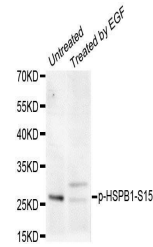


Product Datasheet

HSPB1 (phospho-S15) antibody (orb129635)

Description	Rabbit polyclonal antibody to HSPB1
Species/Host	Rabbit
Reactivity	Human, Mouse, Rat
Conjugation	Unconjugated
Tested Applications	IHC, WB
Immunogen	A synthetic phosphorylated peptide around S15 of human HSP27/HSPB1 (NP_001531.1).
Preservatives	Buffer: PBS with 0.02% sodium azide, 50% glycerol, pH7.3.
Concentration	1 mg/ml
Storage	Maintain refrigerated at 2-8°C for up to 2 weeks. For long term storage store at -20°C in small aliquots to prevent freeze-thaw cycles.
Note	For research use only
Isotype	IgG
Clonality	Polyclonal
Purity	Affinity purification
MW	28kDa
Uniprot ID	P04792
Entrez	3315
Dilution Range	WB: 1:500-2000, IHC-P: 1:50-200
Expiration Date	12 months from date of receipt.



Western blot analysis of extracts of var...