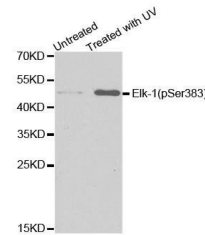


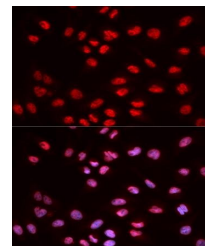
Product Datasheet

ELK1 (phospho-Ser383) antibody (orb129598)

| | |
|----------------------------|---|
| Description | Rabbit polyclonal to ELK1 (phospho-Ser383). |
| Species/Host | Rabbit |
| Reactivity | Human, Mouse, Rat |
| Conjugation | Unconjugated |
| Tested Applications | IHC, WB |
| Immunogen | A synthetic phosphorylated peptide around S383 of human ELK1 (NP_005220.2). |
| Preservatives | Buffer: PBS with 0.02% sodium azide, 50% glycerol, pH7.3. |
| Concentration | 1 mg/ml |
| Storage | Maintain refrigerated at 2-8°C for up to 2 weeks. For long term storage store at -20°C in small aliquots to prevent freeze-thaw cycles. |
| Note | For research use only |
| Isotype | IgG |
| Clonality | Polyclonal |
| Purity | Affinity purification |
| MW | 45kDa |
| Uniprot ID | P19419 |
| Entrez | 2002 |
| Dilution Range | WB: 1:500-1000, IHC-P: 1:50-100, IF/ICC: 1:50-100 |
| Expiration Date | 12 months from date of receipt. |



Western blot analysis of extracts from H...



Immunofluorescence analysis of MCF7 cell...