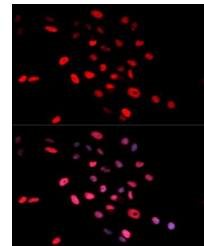


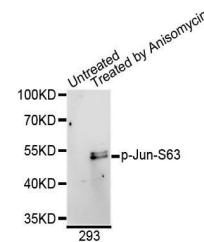
## Product Datasheet

### c-Jun (phospho-S63) antibody (orb129564)

|                            |                                                                                                                                         |
|----------------------------|-----------------------------------------------------------------------------------------------------------------------------------------|
| <b>Description</b>         | Rabbit polyclonal antibody to c-Jun                                                                                                     |
| <b>Species/Host</b>        | Rabbit                                                                                                                                  |
| <b>Reactivity</b>          | Human                                                                                                                                   |
| <b>Conjugation</b>         | Unconjugated                                                                                                                            |
| <b>Tested Applications</b> | WB                                                                                                                                      |
| <b>Immunogen</b>           | A synthetic phosphorylated peptide around S63 of human c-Jun (NP_002219.1).                                                             |
| <b>Preservatives</b>       | Buffer: PBS with 0.02% sodium azide, 50% glycerol, pH 7.3.                                                                              |
| <b>Concentration</b>       | 1 mg/ml                                                                                                                                 |
| <b>Storage</b>             | Maintain refrigerated at 2-8°C for up to 2 weeks. For long term storage store at -20°C in small aliquots to prevent freeze-thaw cycles. |
| <b>Note</b>                | For research use only                                                                                                                   |
| <b>Isotype</b>             | IgG                                                                                                                                     |
| <b>Clonality</b>           | Polyclonal                                                                                                                              |
| <b>Purity</b>              | Affinity purification                                                                                                                   |
| <b>MW</b>                  | 48kDa                                                                                                                                   |
| <b>Uniprot ID</b>          | <a href="#">P05412</a>                                                                                                                  |
| <b>Entrez</b>              | <a href="#">3725</a>                                                                                                                    |
| <b>Dilution Range</b>      | WB: 1:500-2000, IF/ICC: 1:50-200                                                                                                        |
| <b>Expiration Date</b>     | 12 months from date of receipt.                                                                                                         |



Immunofluorescence analysis of MCF7 cell...



Western blot analysis of extracts of 293...