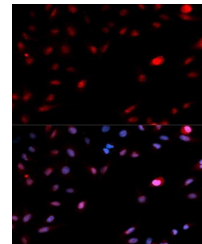


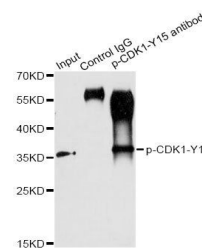
Product Datasheet

CDK1 (phospho-Y15) antibody (orb129556)

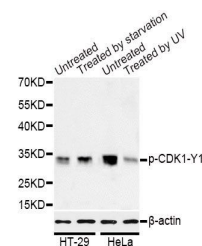
Description	Rabbit polyclonal antibody to CDK1
Reactivity	Human, Mouse, Rat
Conjugation	Unconjugated
Tested Applications	ICC, IF, IHC, IP, WB
Immunogen	A synthetic phosphorylated peptide around Y15 of human CDK1(NP_001777.1).
Preservatives	PBS with 0.05% proclin300,50% glycerol,pH7.3.
Concentration	1 mg/ml
Storage	Maintain refrigerated at 2-8°C for up to 2 weeks. For long term storage store at -20°C in small aliquots to prevent freeze-thaw cycles.
Note	For research use only
Isotype	IgG
Clonality	Polyclonal
MW	34kDa
Uniprot ID	P06493
Dilution Range	WB: 1:500-1000, IF/ICC: 1:50-100
Expiration Date	12 months from date of receipt.



Immunofluorescence analysis of MCF7 cell...



Immunoprecipitation analysis of 200ug ex...



Western blot analysis of extracts of HT-...