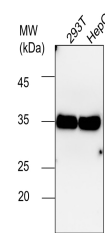


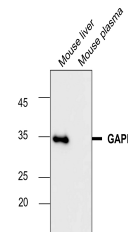
Product Datasheet

GAPDH Antibody (orb1294414)

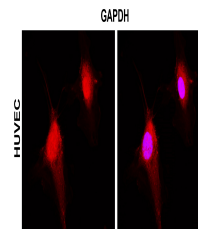
| | |
|----------------------------|--------------------------------------------------------------------------------------------------------------------------------------------------------------------------------|
| Description | Rabbit polyclonal antibody to GAPDH |
| Species/Host | Rabbit |
| Reactivity | Human, Mouse, Rabbit |
| Conjugation | Unconjugated |
| Tested Applications | IF, IHC, WB |
| Immunogen | Synthetic peptide / encompassing a sequence within the C-terminus region. |
| Target | GAPDH |
| Storage | Store at +4°C for short term storage. Long time storage is recommended at -20°C 100mM Tris Glycine, 1% BSA, 20% Glycerol (pH7). 0.025% ProClin 300 was added as a preservative |
| Note | For research use only |
| Isotype | Rabbit-IgG |
| Clonality | Polyclonal |
| Dilution Range | Western Blot 1:5000-1:10000 Immunofluorescence 1:200-1:500 Immunohistochemistry (Paraffin) 1:400-1:600 |
| Expiration Date | 12 months from date of receipt. |



Anti-GAPDH antibody
- 1/5000 dilution, L...



Anti-GAPDH antibody
- 1/5000 dilution, L...



Immunofluorescence:
cells were fixed wit...