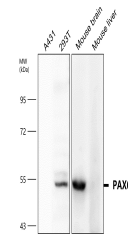


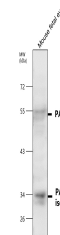
Product Datasheet

PAX6 Antibody (orb1294411)

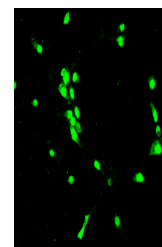
| | |
|----------------------------|--|
| Description | Rabbit polyclonal antibody to PAX6 |
| Species/Host | Rabbit |
| Reactivity | Human, Mouse, Rabbit |
| Conjugation | Unconjugated |
| Tested Applications | IF, IHC, WB |
| Immunogen | Synthetic peptide / encompassing a sequence within the center region. |
| Target | PAX6 |
| Storage | Store at +4°C for short term storage. Long time storage is recommended at -20°C 100mM Tris Glycine, 1% BSA, 20% Glycerol (pH7). 0.025% ProClin 300 was added as a preservative |
| Note | For research use only |
| Isotype | Rabbit-IgG |
| Clonality | Polyclonal |
| Dilution Range | Western Blot 1:500 Immunofluorescence 1:200-1:300 Immunohistochemistry (Paraffin) 1:100 |
| Expiration Date | 12 months from date of receipt. |



Anti-PAX6 antibody - 1/500 dilution, Lys...



Anti-PAX6 antibody - 1/500 dilution, Lys...



Cells were fixed with 4% PFA for 10 min ...