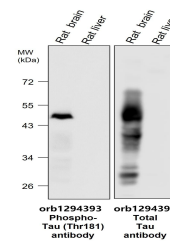


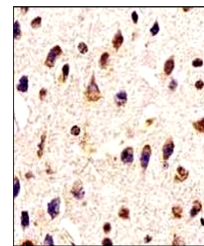
## Product Datasheet

### Tau Antibody (orb1294394)

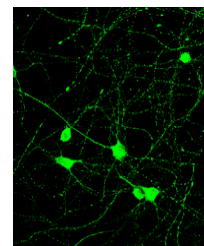
<b>Description</b>	Rabbit polyclonal antibody to Tau
<b>Species/Host</b>	Rabbit
<b>Reactivity</b>	Human, Mouse, Rabbit
<b>Conjugation</b>	Unconjugated
<b>Tested Applications</b>	IF, IHC-Fr, IHC-P, WB
<b>Immunogen</b>	Synthetic peptide / encompassing a sequence within the C-terminus region.
<b>Target</b>	Tau
<b>Storage</b>	Store at +4°C for short term storage. Long time storage is recommended at -20°C 100mM Tris Glycine, 20% Glycerol (pH7). 0.025% ProClin 300 was added as a preservative
<b>Note</b>	For research use only
<b>Isotype</b>	Rabbit-IgG
<b>Clonality</b>	Polyclonal
<b>Dilution Range</b>	Western Blot 1:3000 - 1:5000 Immunofluorescence 1:200 - 1:500 Immunohistochemistry (Paraffin) 1:200 - 1:300 Immunohistochemistry (Frozen) 1:200 - 1:400
<b>Expiration Date</b>	12 months from date of receipt.



Anti-Tau antibody,  
Lysates at 40 µg  
per...



Immunohistochemical  
analysis of paraffin...



Immunofluorescent  
analysis. Sample:  
prim...