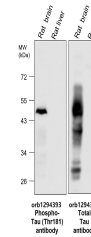


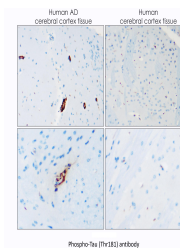
## Product Datasheet

# Tau (Phospho-Thr181) antibody (orb1294393)

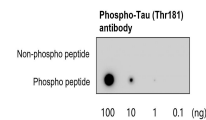
<b>Description</b>	Rabbit polyclonal antibody to Tau (Phospho Thr181)
<b>Species/Host</b>	Rabbit
<b>Reactivity</b>	Human, Mouse, Rabbit
<b>Conjugation</b>	Unconjugated
<b>Tested Applications</b>	IF, IHC-Fr, WB
<b>Immunogen</b>	Synthetic peptide corresponding to residues surrounding Thr181 of human Tau protein
<b>Target</b>	Phospho-Tau (Thr181)
<b>Storage</b>	Store at +4°C for short term storage. Long time storage is recommended at -20°C 100mM Tris Glycine, 30% Glycerol (pH7). 0.025% ProClin 300 was added as a preservative
<b>Note</b>	For research use only
<b>Isotype</b>	Rabbit-IgG
<b>Clonality</b>	Polyclonal
<b>Dilution Range</b>	Western Blot 1:500-1:1500 Immunofluorescence 1:200-1:400 Immunohistochemistry (Paraffin) 1:100
<b>Expiration Date</b>	12 months from date of receipt.



Anti-Phospho-Tau (Thr181) antibody at 1/...



Immunohistochemical analysis of paraffin...



Specificity and sensitivity of Phospho-T...