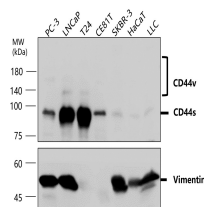


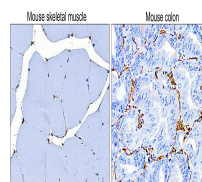
Product Datasheet

Vimentin Antibody (orb1294389)

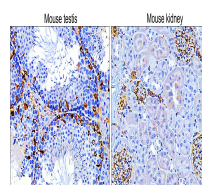
Description	Rabbit polyclonal antibody to Vimentin
Species/Host	Rabbit
Reactivity	Human, Mouse, Rabbit
Conjugation	Unconjugated
Tested Applications	IF, IHC, IP, WB
Immunogen	Synthetic peptide / encompassing a sequence within the C-terminus region.
Target	Vimentin
Storage	Store at +4°C for short term storage. Long time storage is recommended at -20°C 100mM Tris Glycine, 1% BSA, 20% Glycerol (pH7). 0.025% ProClin 300
Note	For research use only
Isotype	Rabbit-IgG
Clonality	Polyclonal
Dilution Range	Western Blot 1:2000-1:5000 Immunofluorescence 1:200-1:500 Immunohistochemistry (Paraffin) 1:200-1:300 Immunoprecipitation: Reported in the literature, not verified in house.
Expiration Date	12 months from date of receipt.



Lysates/proteins at 30 µg per lane. Thi...



Immunohistochemical analysis of paraffin...



Immunohistochemical analysis of paraffin...